

## Conveyor Type A

(30l; 60l; 80l; 100l; 250l; 300l; 500l; 750l; 1000l; 1500l; 2000l)

### Field of use

For conveying dusty and dry bulk materials, such as

- Bentonite
  - Carbon dust
  - Cement
  - Sugar, dust
  - Cupola dust
  - Lime
- and similar products

Capacity up to 15 m<sup>3</sup>/h  
 Conveying distance up to 300 m  
 Temperature of conveyed material up to 200 °C  
 Required compressed air connection 6 bar

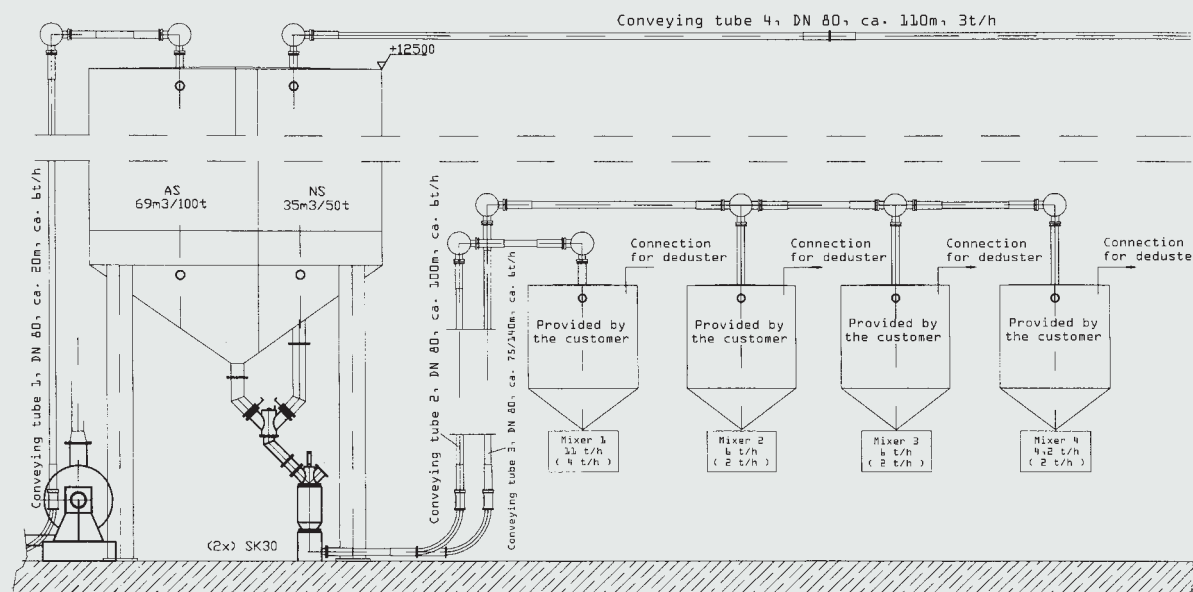


### Working Method

The conveyor type A is working in accordance with the dense stream conveying method (discontinuous aeration procedure) during which the material is aerated by means of a fluidized-bed and is then blown into the conveying tube by help of compressed air.



Please do not hesitate to contact our experienced specialists who will be pleased to submit the adequate solution you need for the conveying problems you have.



More than 25 years of flexibility · competence · reliability

### Reference List of Customers

- |   |   |  |
|---|---|--|
| <ul style="list-style-type: none"> <li>■ DISA GEORG FISCHER<br/>DK-2730 Herlev, Denmark</li> <li>■ CH-8201 Schaffhausen, Schweiz</li> <li>■ Founderie de Moundon<br/>CH-1510 Moundon</li> <li>■ Gebr. Gienanth<br/>D-67298 Eisenberg</li> <li>■ Hagenburger<br/>D-67269 Grünstadt</li> <li>■ Honeywell AG<br/>D-74821 Mosbach</li> <li>■ Hundhausen<br/>D-58239 Schwerte</li> </ul> | <ul style="list-style-type: none"> <li>■ Küttner GmbH &amp; Co. KG<br/>D-45128 Essen</li> <li>■ Linde AG<br/>D-63743 Aschaffenburg</li> <li>■ Saint Gobain<br/>Pont a Mousson<br/>F-54076 Nancy</li> <li>■ Proferro N.V.<br/>8900 Ieper, Belgien</li> <li>■ DaimlerChrysler AG<br/>D-70546 Stuttgart</li> <li>■ RENAULT<br/>F-69635 Venissieux</li> </ul> | <ul style="list-style-type: none"> <li>■ Schiefelbusch Aluguß<br/>D-53567 Buchholz</li> <li>■ Schubert &amp; Salzer<br/>Eisenwerk Erla<br/>D-08340 Erla</li> <li>■ Hydro Aluminium<br/>Alucast GmbH<br/>D-66763 Dillingen</li> <li>■ Gußwerk Waltenhofen<br/>D-87448 Waltenhofen</li> <li>■ Burkhardt GmbH<br/>D-95447 Bayreuth</li> </ul> |
|---|---|--|



**Hensel GmbH**  
 Eisenhüttenstraße 26  
 D-57074 Siegen / Germany

Tel ++49(0)271 66123-35  
 Fax ++49(0)271 61866

[www.hensel-giessereitechnik.de](http://www.hensel-giessereitechnik.de)  
 eMail [info@hensel-giessereitechnik.de](mailto:info@hensel-giessereitechnik.de)

A Member of  
**ROTAMIL**  
 Equipment Engineering · Plant Construction  
 Industrial Fans

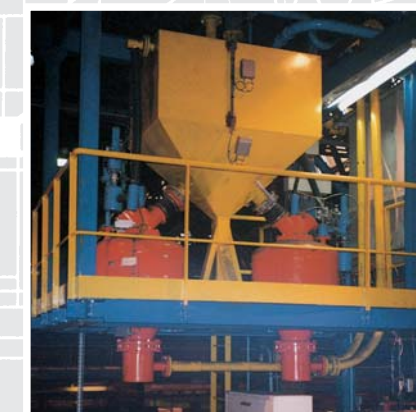


LANGERWERBUNG www.langerwerbung.de 05/03

More than 25 years of flexibility · competence · reliability

## Foundry Technology

### Moulding Plants with Continuous Mixers



### Sand Reclamation Plants

Provided by the customer

### Pneumatic Conveying Plants

Connection for deduster

2xSk30



## Moulding Plants

We have been specialized in the production of equipment and plants designed to manufacture cold-resin bound molds and cores. We are in a position to offer this molding technology (with boxes or boxless) in complete versions.

The following main equipment are manufactured in our own production:

- Continuous mixer (up to 60 to/h) (stationary/fixe/movable/adjustable for height/remote-controlled)
- Dosing pumps and installations for binder systems
- Compacting desks
- Manipulators
- Turn over separating devices
- Flooding stations
- Discharging devices
- Handling and transport equipment for moulds and cores (conveyor belts, roller conveyors, transfer cars)

**Continuous Mixer**



**Turn over separating device**



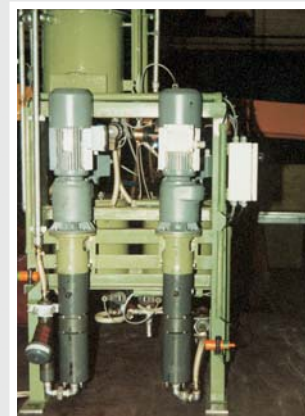
**Manipulator for molds**



**Flooding station**



**Dosing pumps**



## Sand Reclamation Plants

Solutions for the improvement of the sand quality, the reduction of the new sand portion or the reduction of the deposited quantities (cost reduction).

We are your experienced partner concerning all questions about sand reclamation; ranging from planning, commissioning to the carrying out of services. We are manufacturers of special individual equipment for sand reclamation plants, such as

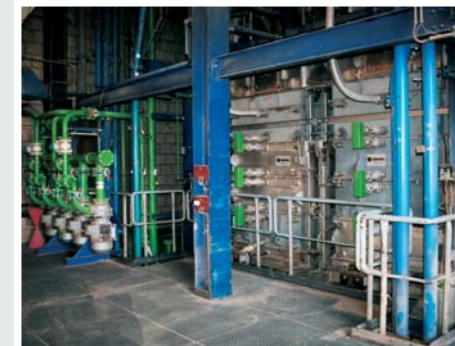
**Vibration crusher VB 800**

Capacity: up to 8to/h



**Sand cooler SK**

Capacity: 45 to/h



**Sand cleaner**

Capacity: up to 5 to/h



**Discharging device**



**Vibration crusher VB**

Capacity: up to 25 to/h



**Fluidized-bed sand heater for charges**

Capacity: 8 to/h



Further individual equipment out of our product range:

- Heavy-duty cascade sifting machines
- Fluidized-bed cooling sifters
- Sand warming-up devices

## Pneumatic Conveying Technology

Specialized in the production of complete pneumatic conveying plants for grainy and dusty bulk materials, we are in a position to develop individual solutions according to the customer's requirements. We are your reliable, experienced and competent partner right from the first discussions, the planning, the commissioning up to our extensive services.



**Conveyor Type S**

(30l; 60l; 100l; 300l; 500l; 750l)

**Field of use**

For discontinuous and gentle conveying of dry grainy bulk materials (for further details see Model SK).

**Working Method**

Operation of the Sender Model S is based on the discontinuous impulse method where the sender is first filled and then discharged using compressed air.

## Conveyor Type SK

**Field of use**

For conveying dry, grainy and pourable bulk materials, such as

- Foundry sand
- Granulates
- Sugar crystalline and similar products

Capacity	up to 12 m <sup>3</sup> /h
Conveying distance	up to 150 m
Temperature of conveyed material	up to 200 °C
Required compressed air connection	6 bar

**Working Method**

The conveyor type SK is working in accordance with the shear conveyor procedure (impulse method) using very short intervals with the conveying tube. The conveyor feeds cyclically the material to be transported in small quantities into the conveying tube so that a continuous conveying is guaranteed.

**Special Advantages**

- No requirement for a SK 30 TÜV- approval
- High efficiency, i.e. lowest possible need of compressed air
- low conveying speed guarantees a gentle and careful conveying and thus a minimum wear on the conveying tube

