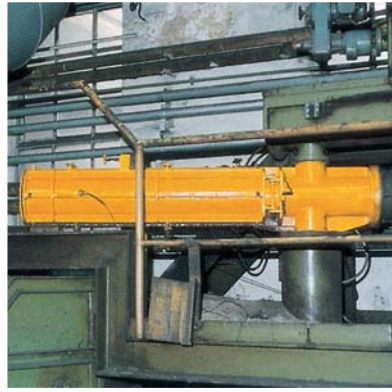


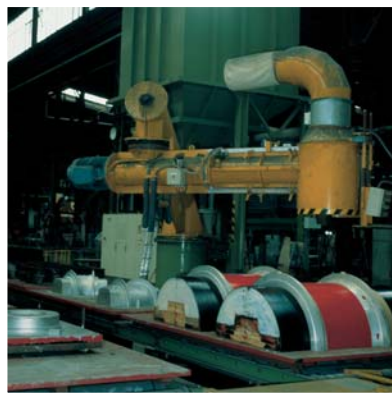
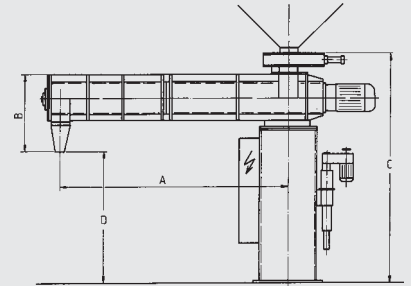
Continuous Mixer



Continuous High-Speed Mixer SM 1

Continuous Mixer consisting of a mixing tube and a turbo mixer.

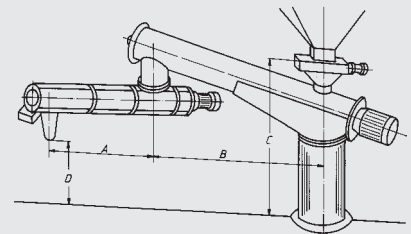
Type	Capacity to/h	A	C	D
SM-10	1 - 3	1200 + 1600	adjustment to operational needs	
SM-11	5 - 6 (10)	2000		
SM-12	8 - 15 (20)	2200		
SM-13	20 - 30 (40)	2500 + 3000		



Continuous High-Speed Mixer SM 2

Continuous Mixer SM 2 in twinlink version, equipped with a conveyor screw and a mixing tube with turbo mixer.

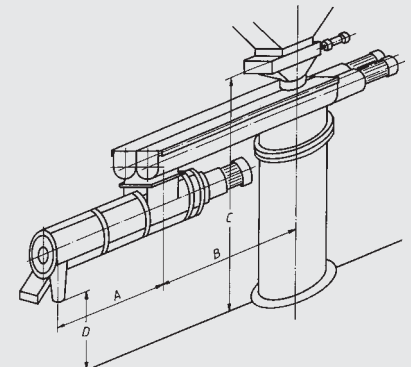
Type	Capacity to/h	A	B	C	D
SM 20	1 - 3	1200	2000	adjustment to operational needs	
SM 21	3 - 6 (10)	2000	2500		
SM 22	8 - 16 (20)	2200	up to 4000		
SM 23	20 - 35 (40)	2500-3000			
SM 24	40 - 50 (60)	3000			



Continuous Three-Shaft Mixer DWM

equipped with separate premix worms for resin and hardener and a final mixer.

Type	Capacity to/h	A	B	C	D
DWM 0	1 - 3	1200	1500	adjustment to operational needs	
DWM 1	3 - 6 (10)	1600	1500		
DWM 2	8 - 16 (20)	1600	2000		
DWM 3	20 - 35 (40)	1600	up to 3500		
DWM 4	40 - 50 (60)	2000	3500		



- Working with binder having a viscosity ≤ 1600 cp
- Lowest consumption of binder
- Low wear thanks to low turning rates of the premix worms and the final mixer



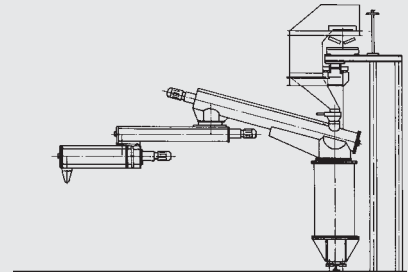
HENSEL



Console Version, Movable Mixer

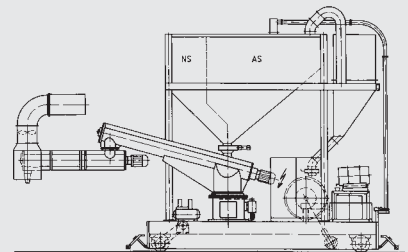
Continuous Mixer or Continuous Three-Shaft-Mixer (adjustable in height) equipped with stripping car and transfer hopper fixed on a travelling gear. The sand is continuously supplied by a belt conveyor.

The binder tanks are installed on the travelling gear.



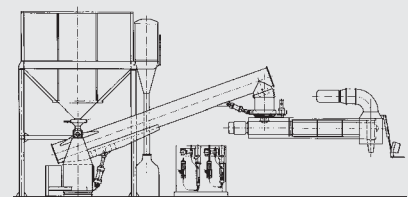
Mobile Version, Movable Mixer

Continuous Mixer or Continuous Three-Shaft-Mixer (adjustable in height) equipped with a traveling gear on which sand bunkers and binder tanks are mounted. The sand supply is guaranteed by a filling station.



Mixer adjustable in height

Continuous Mixer or Continuous Three-Shaft-Mixer (adjustable in height) equipped with a hydraulically operating height adjustment (1-2 m) integrated in the pedestal.



Further versions on demand.

Hensel GmbH
Eisenhüttenstraße 26
D-57074 Siegen
Germany

Tel ++49(0)271 661 23-35
Fax ++49(0)271 61866
www.hensel-giessereitechnik.de
info@hensel-giessereitechnik.de

A Member of



Equipment Engineering · Plant Construction
Industrial Fans